


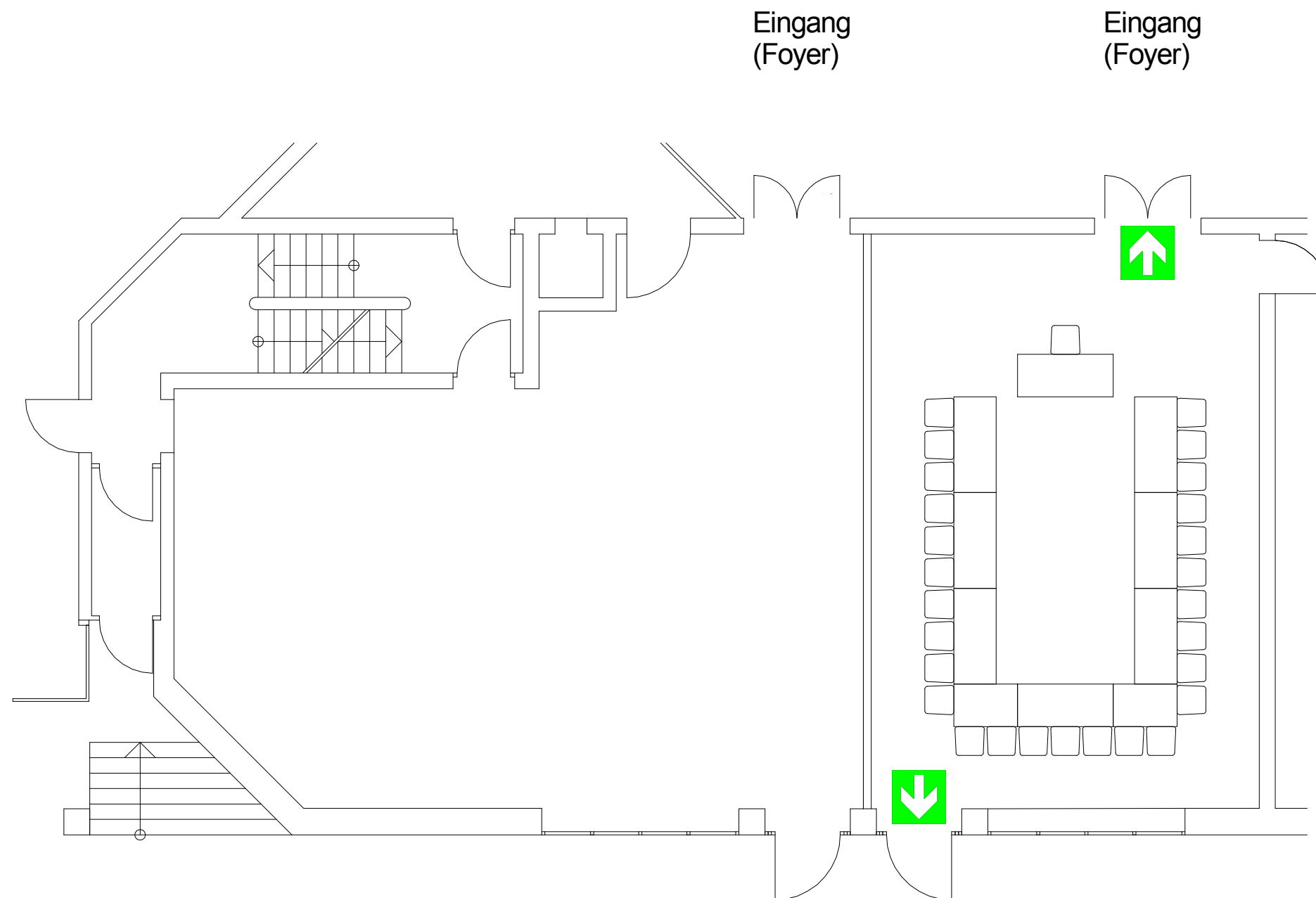



Bestuhlungs- und Rettungswegeplan

U-Form	0		27		0	
27 Besucher	0					
STADTHALLE ERDING		Alois-Schieß-Platz 1, 85435 Erding				
Kleiner Saal links		Plan-Nr. 17d		M 1:100		
Plansteller:	Franz Dichtl	Datum Planerstellung:		Oktober 2014		
Genehmigt						
durch Stadt Erding am 29.06.2015						
..... Fertigung						
Erding, den						



 Gekennzeichneter Rettungsweg